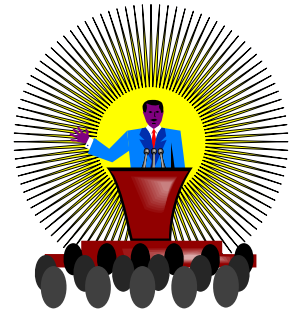


Northern California/Northern Nevada PUBLIC SPEAKING FESTIVAL GUIDELINES



I PURPOSE

The Public Speaking Festival is designed to encourage youth in the development and use of talents and gifts which the Lord has given them for use in ministry.

II FESTIVAL GUIDELINES

1. Participants may choose one of the following Public Speaking/Ministry Presentation opportunities, including **Preaching, Large Group or Council Time Messages**, and **Large Group or Council Time Presentations** such as puppets and drama.
2. The presentation length must meet the following criteria determined by the target audience:
 - a. 7-10 minutes (K-6th)
 - b. 15-20 minutes (Teen/Adult)
3. Theme: salvation/evangelism or Christian living.
4. Large Group or Council Time messages will be geared for third- to sixth-grade Awana clubbers. Large Group or Council Time Presentations and Preaching may be for all ages.
5. Participants must supply judges with **three clearly typed outlines** describing the content of the presentation.
6. Participants must bring own props, if necessary.
7. **Your registration entry is to be sent by January 10, 2012 to:**

Joel & Virginia Cook
1631 Sweem Street
Oroville, CA 95965
joelco@awana.org

8. Please note: the rating system used at Summit 2012 and Journey Weekend will vary.

III JUDGING

Judging will encompass the following criteria:

1. General Appearance: Speaker's dress or costume appropriate to the topic
2. Presentation: Enthusiasm, quality and volume of voice, body language, eye contact
3. How the speaker relates to the audience: Confidence, creativity, audience's interest is kept, visual effectiveness
4. Use of Scripture in presentation: Is it read or quoted and what passage is the presentation based on?
5. Content: Outline is provided, material is organized, introduced clearly and scripturally based, the topic is identified
6. Presentation of the gospel: Clear and complete
7. Delivery of presentation: Points build progressively and logically
8. Compelling conclusion
9. Use of application to life of audience
10. Sufficient preparation
11. Answers BASED questions
 - a. Bible Truth – What does Scripture say?
 - b. Apply – What should I do?
 - c. Specify – How can I do it?
 - d. Equip – What do I need to do it?
 - e. Disciple – Will you show me how?